



SHANTA GOLD HARDMAN & CO INVESTOR PRESENTATION

11 November 2020



Disclaimer

This Document comprises an institutional update presentation (the “Presentation”) which has been prepared by and is the sole responsibility of Shanta Gold Limited (the “Company”).

This Presentation does not constitute or form part of an admission document, listing particulars or a prospectus relating to the Company or any offer for sale or solicitation of any offer to buy or subscribe for any securities nor shall it or any part of it form the basis of or be relied on in connection with, or act as any inducement to enter into, any contract or commitment whatsoever or constitute an invitation or inducement to engage in investment activity under section 21 of the UK Financial Services and Markets Act 2000. This presentation does not constitute a recommendation regarding any decision to sell or purchase securities in the Company.

Notwithstanding the above, in the United Kingdom, this Presentation is only being given to persons reasonably believed by the Company to be investment professionals within the meaning of paragraph (5) of Article 19 persons in the business of disseminating information within the meaning of Article 47 of the Financial Services and Markets Act 2000 (Financial Promotion) Order 2005 (SI 2005/1529) or to high net worth companies or unincorporated associations and any person to whom the communication may otherwise lawfully be made within the meaning of paragraph (2) of Article 49 of the Financial Services and Markets Act 2000 (Financial Promotion) Order 2005 (SI 2005/1529), and the Proposed Offer will only be available to such persons who are also qualified investors within the meaning of section 86(7) FSMA purchasing as principal or in circumstances under section 86(2) FSMA. This Presentation is only being sent to persons reasonably believed by the Company to be investment professionals or to persons to whom it may otherwise be lawful to distribute it. If you are not such a person (i) you should not have received this Presentation and (ii) please return this Presentation to the Company's registered office as soon as possible and take no other action. If you are not such a person you may not rely on or act upon matters communicated in this Presentation. By accepting this Presentation the recipient represents and warrants that they are a person who falls within the above description of persons entitled to receive this Presentation.

This document has not been approved by an authorised person under Section 21 of the Financial Services and Markets Act 2000 (“FSMA”).

This Presentation is not intended to be distributed, or passed on, directly or indirectly, to any other class of person and in any event under no circumstances should persons of any other description rely or act upon the contents of this Presentation. This Presentation and its contents are confidential and must not be distributed or passed on, directly or indirectly, to any other person. This presentation is being supplied to you solely for your information and may not be reproduced, further distributed or published in whole or in part by any other person.

No representation or warranty, express or implied, is made or given by or on behalf of the Company, its advisers or any of their respective parent or subsidiary undertakings or the subsidiary undertakings of any such parent undertakings or any of the directors, officers or employees of any such person as to the accuracy, completeness or fairness of the information or opinions contained in this Presentation and no responsibility or liability is accepted by any person for such information or opinions or for any liability, howsoever arising (directly or indirectly) from the use of this Presentation or its content or otherwise in connection therewith. No person has been authorised to give any information or make any representations other than those contained in this Presentation and, if given and/or made, such information or representations must not be relied upon as having been so authorised. The contents of this Presentation are not to be construed as legal, financial or tax advice.

The information has not been verified nor independently verified by the Company's advisers and is subject to material updating, revision and further amendment.

The Company has not been, and will not be, registered under the United States Investment Company Act of 1940, as amended, and investors will not be entitled to the benefits of that Act. Neither this Presentation nor any copy of it may be taken or transmitted into the United States of America or its territories or possessions (the “United States”), or distributed, directly or indirectly, in the United States, or to any U.S Person as defined in Regulation S under the Securities Act 1933 as amended, including U.S resident corporations or other entities organised under the laws of the United States or any state there of or non-U.S branches or agencies of such corporations or entities or into Canada, Australia, Japan, or the Republic of Ireland. Neither this Presentation nor any copy of it may be taken or transmitted into or distributed in Canada, Australia, Japan, or the Republic of Ireland, or any other jurisdiction which prohibits the same except in compliance with applicable securities laws. Any failure to comply with this restriction may constitute a violation of United States or other national securities law. Forward-Looking Statements. Information contained in this Presentation may include 'forward-looking statements'. All statements other than statements of historical facts included herein, including, without limitation, those regarding the Company's financial position, business strategy, plans and objectives of management for future operations (including development plans and objectives relating to the Company's business) are forward-looking statements.

Such forward-looking statements are based on a number of assumptions regarding the Company's present and future business strategies and the environment in which the Company expects to operate in future. Actual results may vary materially from the results anticipated by these forward-looking statements as a result of a variety of factors. These forward-looking statements speak only as to the date of this Presentation and cannot be relied upon as a guide to future performance. The Company expressly disclaims any obligation or undertaking to disseminate any updates or revisions to any forward-looking statements contained in this Presentation to reflect any changes in its expectations with regard thereto or any change in events, conditions or circumstances on which any statement is based. Past performance is not a guide to future performance.

EXPERIENCED MANAGEMENT AND BOARD

Management and directors own 7.3% of Shanta Gold (AIM:SHG)

On today's call: Executive Directors



ERIC ZURRIN
CEO

- 19 years' experience in mining including 6 years in Tanzania and 5 years in Asia
- Previously CFO of Shanta Gold
- Previously with UBS Investment Bank covering Metals & Mining Africa/ Middle East



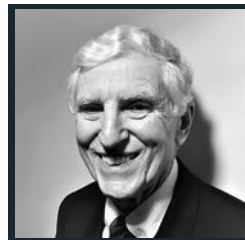
LUKE LESLIE
CFO

- 19 years' experience in mining including 7 years in Tanzania and 4 years in China
- Previously with UBS Investment Bank covering Metals & Mining Africa/ Middle East
- Formerly management consultant at Accenture



TONY DURRANT
Chairman

- Former Global Head of Metals & Mining at UBS Investment Bank
- Currently Chairman of the Investment Advisory Committee Arias Resource Capital Management



ROB FRYER
Non-Executive Director

- Led global mining practice at Deloitte
- 40 years' experience in audit/finance



KEITH MARSHALL
Non-Executive Director

- 35 years' experience 22 years with Rio Tinto
- Former President of Oyu Tolgoi in Mongolia and MD Palabora in South Africa



KETAN PATEL
Non-Executive Director

- MD of Export Trading Group, soft commodity trading in 22 countries across Africa
- Founder Shanta Gold

Note: Ownership level as of November 2nd 2020





**HIGHLY COMPELLING GROWTH
UNDERPINNED BY DEEP FUNDAMENTAL VALUE**



SHANTA GOLD OVERVIEW

East-Africa focused portfolio with compelling growth pipeline

NEW LUIKA GOLD MINE

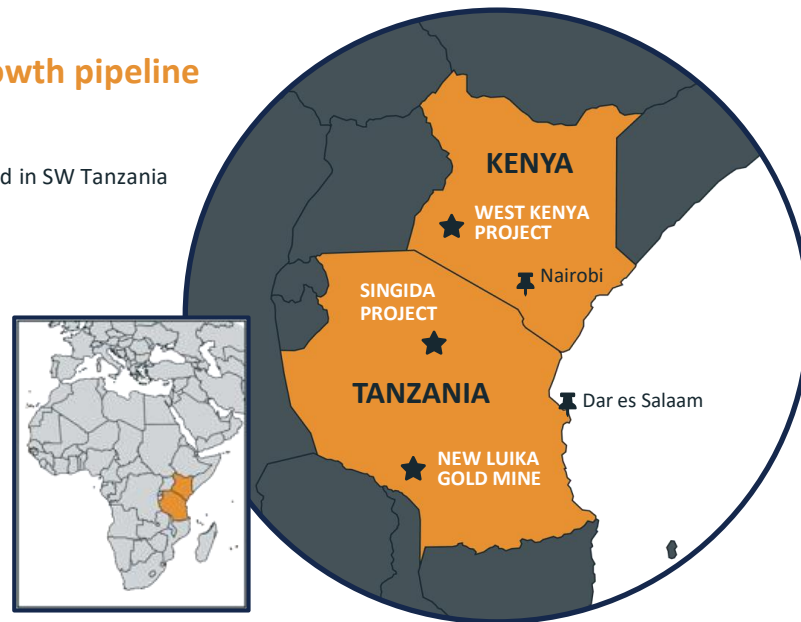
- High grade, low cost gold operation in the under-explored Lupa Gold field in SW Tanzania
- Mine Life through to at least 2025 (based on reserves)
- Reserves: 410 koz at 3.23 g/t
- Resources: 1,091 koz at 2.64 g/t
- 2020 Production Guidance: 80-85 koz
- 2020 AISC Guidance: US\$830-880/oz²

WEST KENYA PROJECT

- Highly prospective gold project in the Lake Victoria gold field
- US\$64 m invested since 2010
- Resources: 1.18 Moz at 12.6 g/t
- Scoping study in place; Infill drilling to begin in Q4 2020
- LOM Avg Production: 105 koz
- LOM Avg AISC³: US\$681/oz

SINGIDA PROJECT

- Open pit gold project in prospective greenstone belt in Central Tanzania
- Reserves: 243 koz at 3.00 g/t (Est. 7 Year Mine Life)
- Resources: 0.90 Moz at 2.38 g/t
- LOM Avg Production: 32 koz
- LOM Avg AISC³: US\$869/oz



Summary Capitalisation¹

Share Price (GBP)	16p
Market Capitalisation	US\$216 m
Net Cash	US\$35m
Enterprise Value	US\$181 m

1. Market Cap calculated using 16p share price (Nov 5th 2020)
 2. Development costs at the BC, Luika and Ilunga underground operations are not included in AISC
 3. Calculated in accordance with World Gold Council methodology

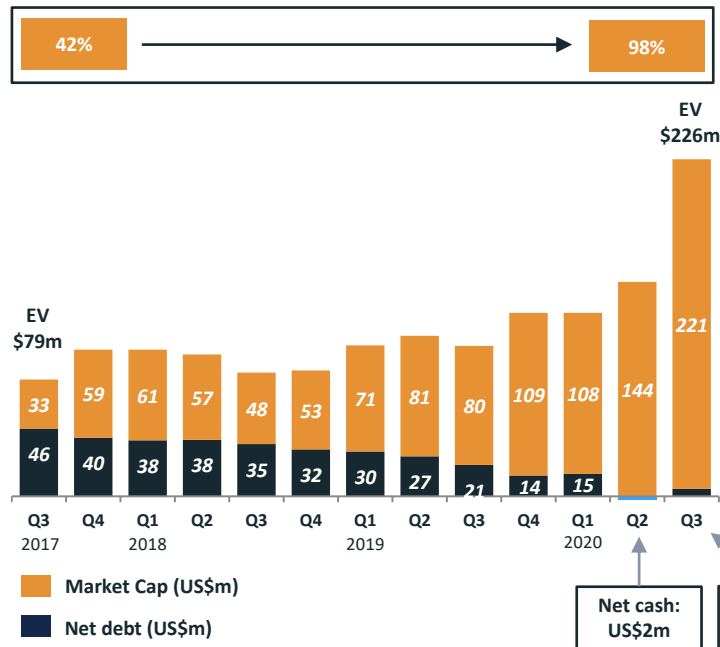


SHANTA GOLD – MANAGEMENT TRACK RECORD

Proven track record of delivering value to shareholders

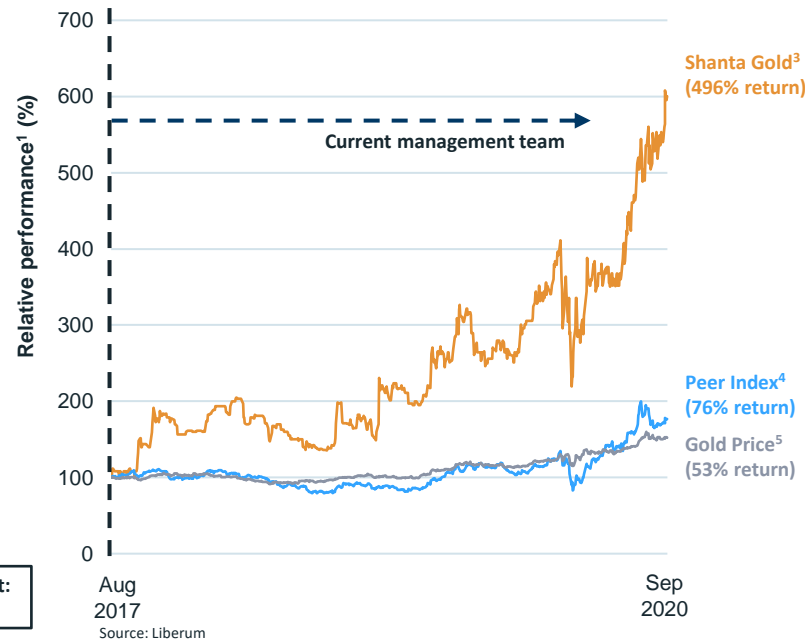
Shanta Gold Enterprise Value

$EV (US\$m) = Net\ debt + Market\ Cap^{1,2}$



Source: Shanta Management

Shanta's relative share price performance during the past three years, versus industry peers and gold spot price



1. Net debt and Market Cap based on the figures reported in quarterly results presentations since Q3 2017, rounded to the nearest US\$1million
2. Q3 2020 Market Cap calculated using 20.0p share price (15 October 2020)
3. Relative performance measured over 3-year period from 17 September 2017 to 17 September 2020
4. Industry peer index represents combined relative performances of HUM, PAF, CMCL, RSG, CGH, SRB and CEY
5. Gold NYMEX Near Term prices presented

GROWTH: INVESTING AT WEST KENYA

Advancing Africa's highest grade +1m oz gold deposit to a Definitive Feasibility Study

- Planned workstreams:
 - Infill drilling to convert resources into reserves
 - Resource expansion drilling
 - Pre-feasibility study
 - Definitive Feasibility study

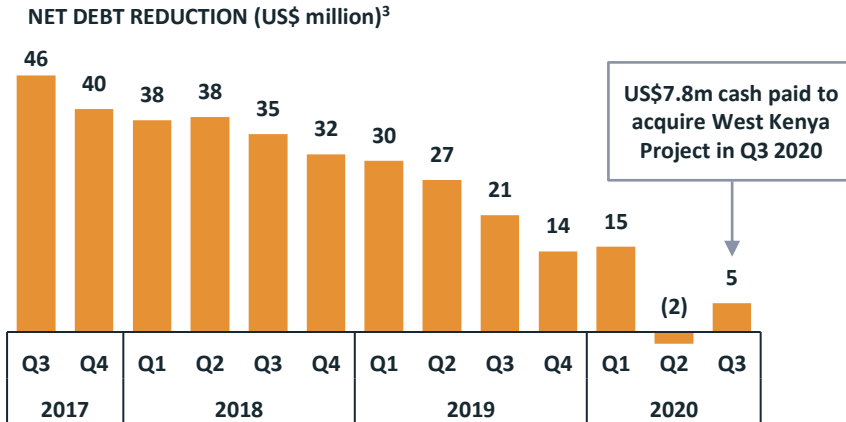
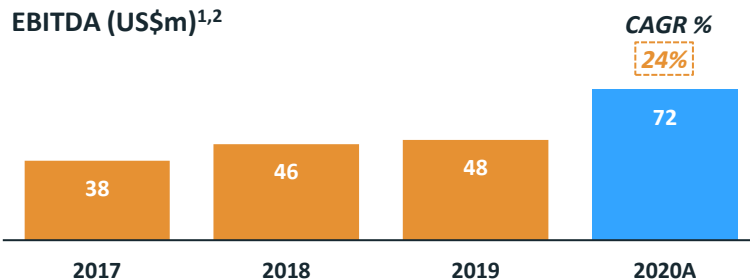
3 YEAR INVESTMENT PROGRAMME	US\$m
West Kenya - infill drilling	15 – 20
Expansion drilling and general corporate purposes	6 – 13
West Kenya – technical studies	4 – 6
West Kenya - working capital ¹ and transaction costs	8
TOTAL	40

1. To be spent over 36 months



VALUE: CASH GENERATIVE, FUTURE DIVIDEND PAYING GOLD PRODUCER

Proven track record of consistent operation performance



COMPANY DIVIDEND POLICY⁴

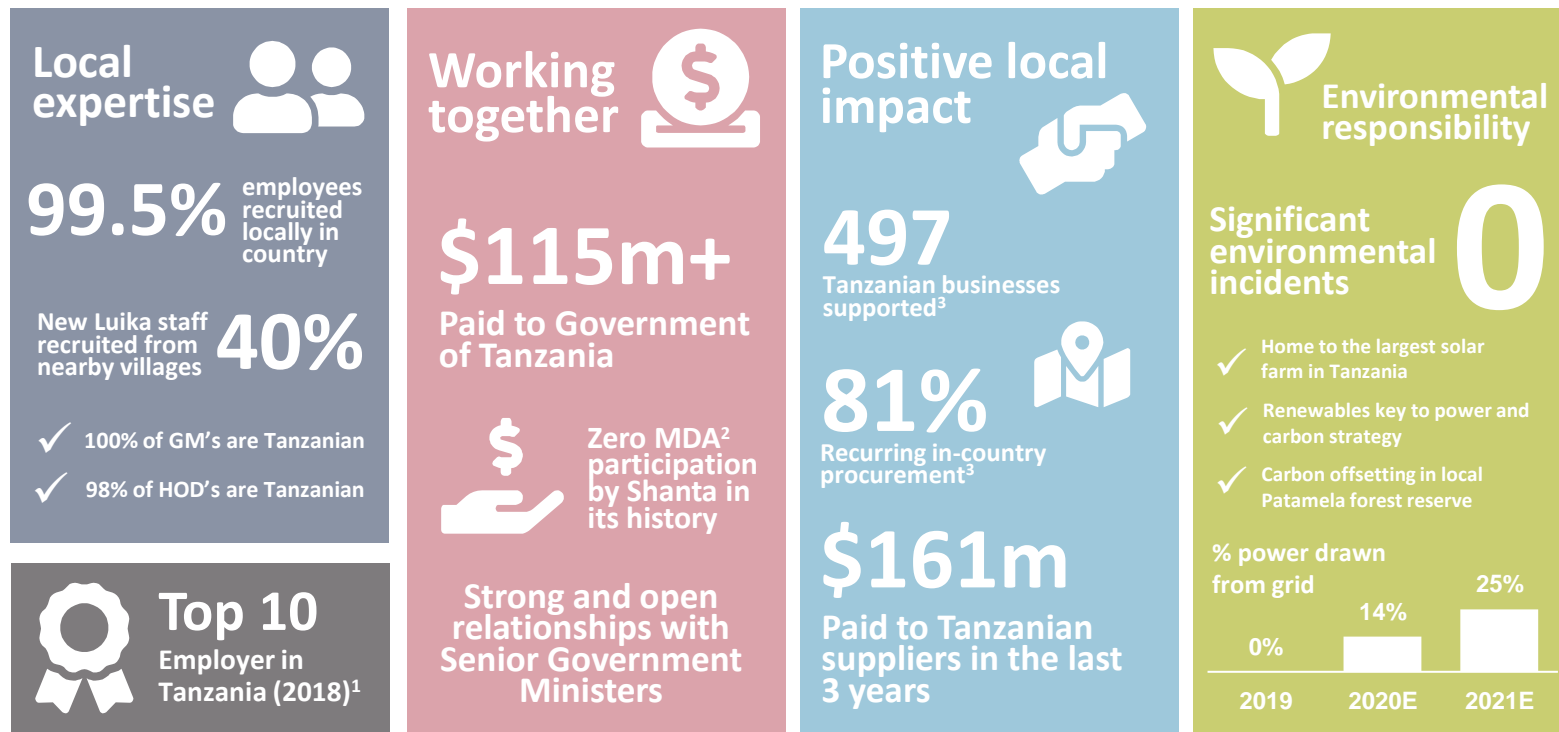
It is the current intention of the Board to pay a dividend on a half yearly basis, beginning April 2021, which will be subject to completion of the Placing, the Company's performance and market conditions.

- 2020 Annualised ("2020A") figures based on Q3 2020 YTD results, annualised using Q3 YTD realised gold price of US\$1,530/oz
- Before non-cash loss on unsettled forward contracts
- Period since current management team were appointed
- The above intended dividend is based on forward-looking statements about the Company's future performance. These statements are based on management's assumptions and beliefs in light of information currently available to it and, therefore, you should not place undue reliance on them. A number of important factors could cause actual results to be materially different from and worse than those discussed in forward-looking statements. Such factors include, but are not limited to: (i) changes in economic conditions affecting operations; (ii) fluctuations in currency exchange rates; (iii) the gold price; (iv) the ability to reduce debt; (v) operational performance.



SUSTAINABILITY: ESG INITIATIVES INTEGRAL TO BUSINESS MODEL

Shanta maintains a strong social license to operate with a long term sustainable approach

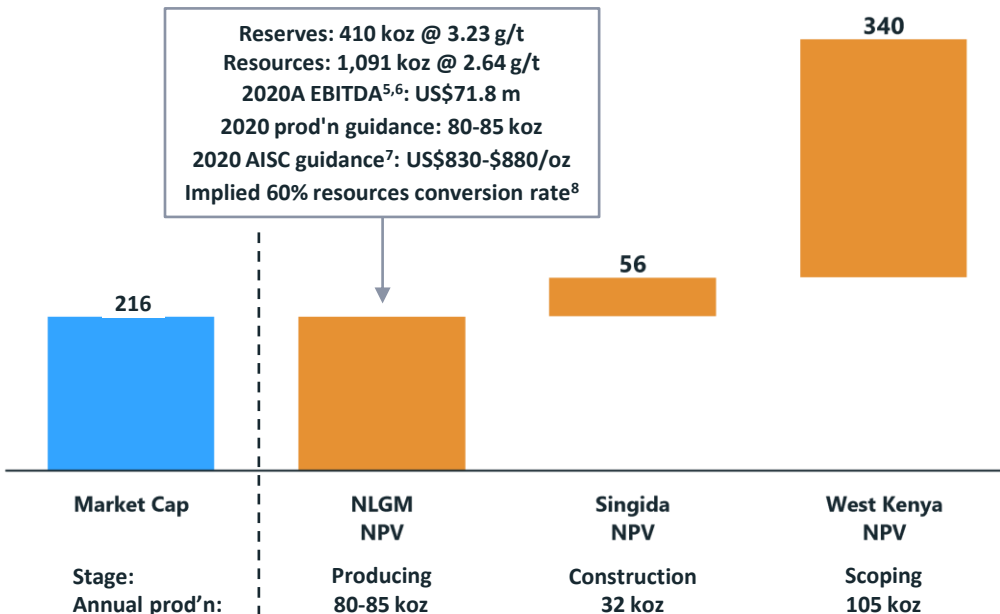


1. Named by the Association of Tanzania Employers, a national award spanning all industries
2. MDA = Mine Development Agreement
3. Measured based on total spend over the period 2017-2019

SHANTA VALUE PROPOSITION

Implied price/NPV implies significant discount

Market capitalisation and group NPV by asset (US\$m)^{1,2,3,4}



653 koz
@ 3.15 g/t

Total group-wide reserves

3,177 koz
@ 3.58 g/t

Total group-wide resources

1. Market Cap calculated using 16p share price (Nov 5th 2020)
2. NLGM NPV bar sizing for illustrative purposes only
3. Singida Project economics prepared internally as announced 07 October 2020, using a LOM gold price of US\$1,700 /oz, 8% discount rate
4. West Kenya Project economics prepared by independent consultant Bara Consulting Pty using a LOM gold price of US\$1,700 /oz, 8% discount rate
5. 2020 (Annualised) figures based on Q3 YTD results
6. Before non-cash loss on unsettled forward contracts
7. Development costs at the BC, Luika and Ilunga underground operations are not included in AISC
8. Using January 2014 resource estimate at New Luika Gold Mine of 794 koz





VALUE DRIVERS AND POTENTIAL CATALYSTS

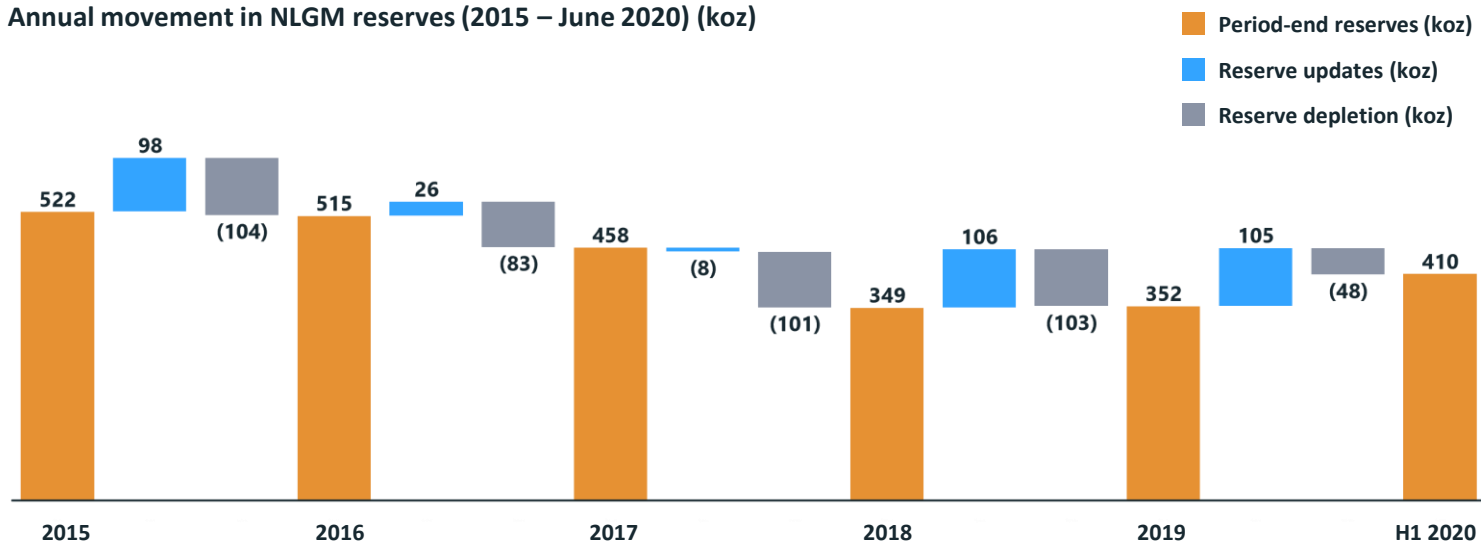


1 NEW LUIKA GOLD MINE – RESOURCE CONVERSION SUCCESSES

Implied 60% conversion rate from resources to reserves¹

- Since 2013, the group has spent an average of US\$3 m p.a. on exploration on the mining licences, replacing 87% of reserves
- This equates to an average conversion cost of \$49/oz.
- 2020 exploration has so far converted 75 koz of additional reserves at New Luika at a conversion cost of \$12/oz

Annual movement in NLGM reserves (2015 – June 2020) (koz)



1. Using January 2014 resource estimate at New Luika Gold Mine of 794 koz

PROJECT HIGHLIGHTS

Using a LOM gold price of US\$1,700 /oz:

- Post-tax NPV_{8%} of US\$56 m and unlevered post-tax IRR of 49%
- Project payback period of 3 years
- Average EBITDA of US\$27 m p.a. over the LOM
- Average annual gold production of 32koz for an initial 7-year mine life through to at least 2029
- LOM cash costs of US\$843/oz and AISC¹ of US\$869/oz
- Estimated pre-production capital cost of US\$26 m for mine construction, plus US\$10 m for pre-stripping targeting a 1,000 tonne per day open pit operation

NPV (post-tax) sensitivity to Gold Price and Discount Rate (US\$m)

Gold Price	Discount Rates		
	0%	8%	10%
US\$1,500 /oz	69	39	34
US\$1,700 /oz	94	56	50
US\$1,900 /oz	119	73	65
US\$2,100 /oz	144	90	81

IRR sensitivity to Gold Price (%)

Gold price	IRR (%)
US\$1,500 /oz	38
US\$1,700 /oz	49
US\$1,900 /oz	59
US\$2,100 /oz	68

Singida Project Economics Summary – Assuming \$1,700/oz Au Price

Metrics	Units	Results
LOM (excluding construction)	years	7.0
Total material mined	t	36,711,000
Contained gold mined	oz	243,000
Strip ratio	w:o	14.2:1
Mill throughput	tpy	365,000
Head grade	g/t	3.0
Processing recovery – Gold	%	91.0
Gold production	koz	221
Cash costs	US\$/oz	843
AISC ¹	US\$/oz	869
Pre-production capex	US\$m	36.8
Sustaining capex	US\$m	2.9
NPV _{8%} (post-tax)	US\$m	56.3
Unlevered IRR (post-tax)	%	49%
Average annual EBITDA over LOM	US\$m	27.0

Singida Project Economics Summary – Assuming \$1,900/oz Au Price

Metrics	Units	Results
NPV _{8%} (post-tax)	US\$m	73.3
Unlevered IRR (post-tax)	%	59%
Average annual EBITDA over LOM	US\$m	32.8

1. Calculated in accordance with World Gold Council methodology



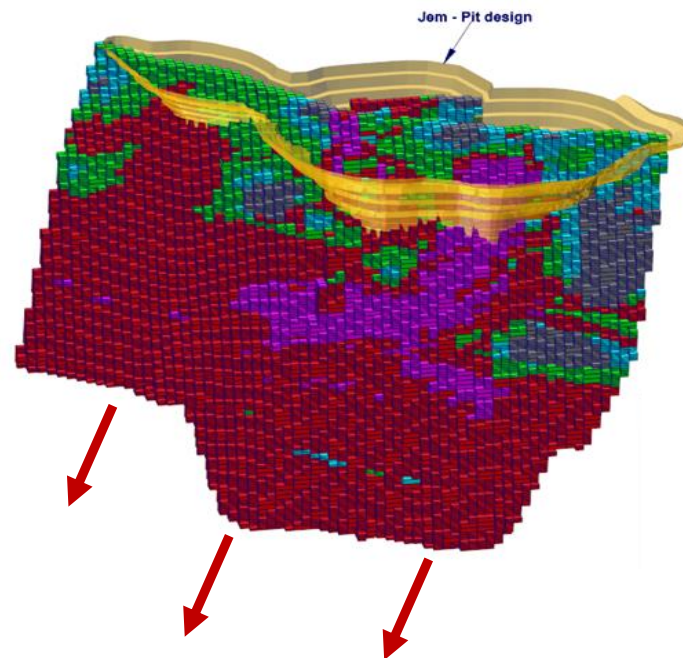
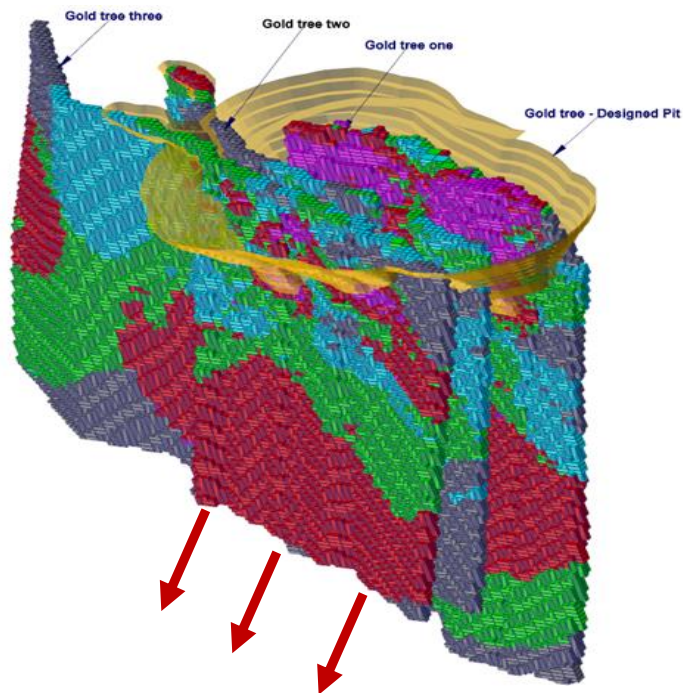
2 SINGIDA – POTENTIAL FOR RESOURCE EXPANSION AND VALUE UPSIDE

14

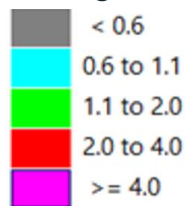
91% of contained ounces within Singida's LOM reserve are less than 120 metres from surface

Gold Tree pit designed with depth of 165 m

Jem pit designed with depth of 120 m



Au_g/t



→ Representation of potential reserve expansion

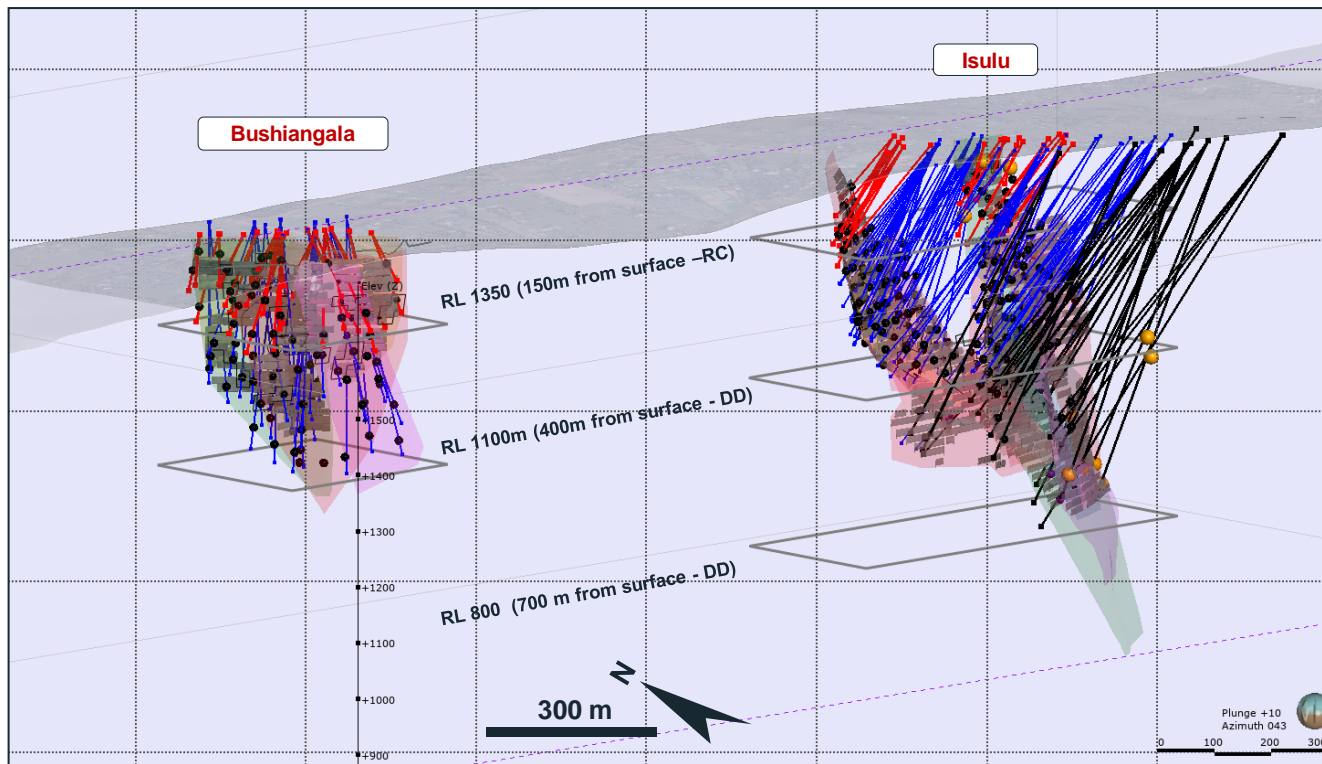
Source: Shanta Management

SHANTA GOLD



3 DRILLING PROGRAMME – 3 PHASES TARGETING BETWEEN 0-700M BELOW SURFACE

Isulu and Bushiangala designed infill drilling targeting the potential for reserves of 786koz @ 12.82 g/t¹



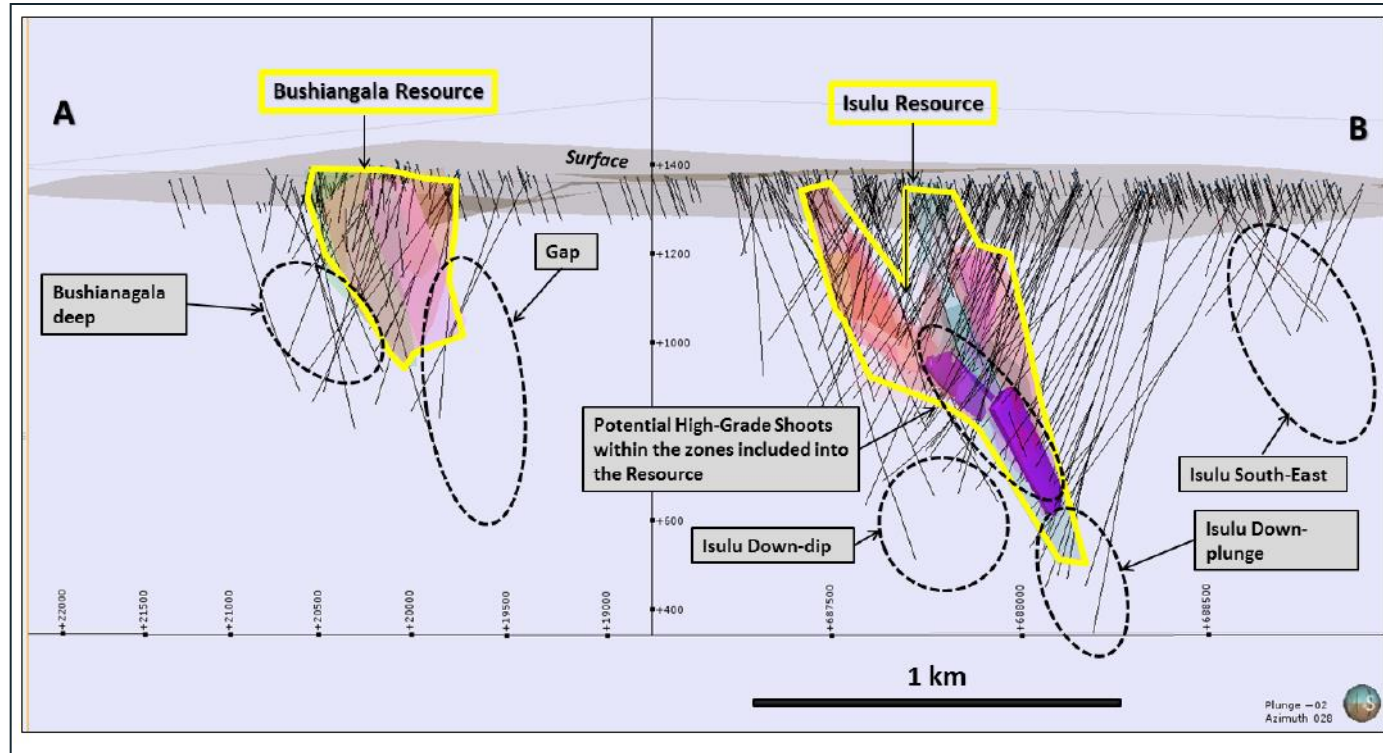
3 Drilling Phases

1. 0-150 meters deep
2. 150-400 meters deep
3. 400-700 meters deep

1. Management estimate based on historical drilling data and geological interpretation. Assumes 65% conversion from Measured & Indicated into reserves

3 WEST KENYA - UPSIDE POTENTIAL WITHIN THE EXISTING NI 43-101 RESOURCE

Numerous proximal targets for potential to significantly increase the gold resource



SHANTA GOLD: INVESTMENT CASE

3.2 million ounces of high grade reserves and resources across a regional portfolio

- 1 Cash generative gold producer**
 - Very cash generative (Annualised EBITDA^{2,3} of US\$102m at US\$1,900/oz)
 - Attractive annualised free cash flow yield of around 22%
 - Intention to pay an inaugural dividend in April 2021
- 2 High quality portfolio of gold assets**
 - Three assets across two countries
 - Reserves of 653koz at 3.15 g/t and resources of 3.2Moz at 3.58 g/t
 - Low cost assets - 2020 AISC Guidance of \$830 - 880/oz⁴ at NLGM
- 3 Highly compelling growth prospects**
 - West Kenya: scoping study with 105koz p.a. production potential (Bara Consulting)
 - Singida: low capital intensity construction project resulting in 32koz p.a. production funded from existing Tanzanian cash flow
- 4 Management track record**
 - 3-year performance of meeting or exceeding production and cost guidance
 - Disciplined cost control enabling \$42m gross debt reduction since 2017
 - Company realised net cash in 2020, first time in its producing history
- 5 Underground gold mining (LHOS)¹ experts**
 - One of the lowest cost practitioners of Long Hole Open Stopping underground mining, the expected mining method for the West Kenya Project (Shanta Management)
- 6 ESG initiatives integral to business model**
 - 20-year successful track record in Tanzania
 - Established social license to operate
 - ESG considerations are core to management decision making

1. LHOS = Long Hole Open Stopping
2. 2020 Annualised ("2020A") figures based on Q3 2020 YTD results, adjusted to reflect spot price of US\$1,900/oz
3. Before non-cash loss on unsettled forward contracts
4. Development costs at the BC, Luika and Ilunga underground operations are not included in AISC



EMAIL

Investors: info@shantagoldltd.com

Employment: jobs@shantagold.com

General enquiries: info@shantagold.com

TANZANIA REGISTERED OFFICE

Address

Shanta Mining Co. Ltd
202, 2nd Floor, Renaissance Plaza,
Plot No. 498, Haile Selassie Road,
Masaki
P.O. Box 79408
Dar es Salaam
Tanzania

Contact numbers

Tel: +255 22 2925148-50

Fax: +255 22 2925151

Email: [mining@shantagold.com](mailto: mining@shantagold.com)

www.shantagold.com

GUERNSEY REGISTERED OFFICE

Registered Address

11 New Street
St Peter Port
Guernsey GY1 2PF

Mailing Address

PO Box 91
11 New Street
St Peter Port
Guernsey GY1 3EG

Contact numbers

Tel: +44 (0) 1481 732 153

Fax: +44 (0) 1481 712 167

 [@shanta_gold](https://twitter.com/shanta_gold)

